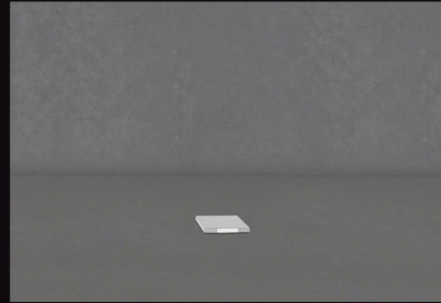


BLOCK SERIES-ONE/TWO/FOUR WAY (VL-6007)

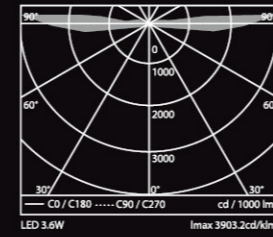
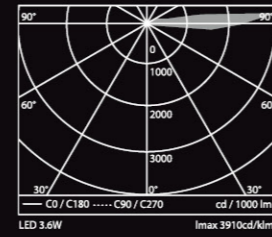
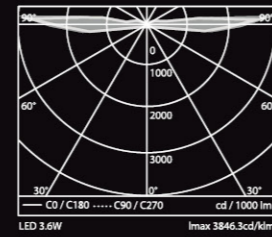
Waterproof in-ground lights for MONO & R.G.B mixing LED PCB type

Fixture height	100mm
Beam angle	One / Two / Four-sided light output
Luminous flux [lm]	20[lm]
Protection Class	IP67
Certification	KS C 7713 _ LED 경관등



Description

사각 형태의 패스형 조명기구인 BLOCK-ONE/TWO/FOUR WAY는 투명 폴리카보네이트 커버와 스테레스 스틸 커버 프레임에 의하여 4방향으로 비추는 방식으로 빛이 연출되는 시선유도 조명기구이다. 은은하면서 부드러운 빛 연출로 보행자에게 안락함을 줄 수 있는 제품으로 개별적으로 서브 콘트롤러 내장이 가능해서 다양한 색상과 디밍 연출로 산책로, 육교, 교량 등에 쾌적하고 편안한 분위기의 빛의 환경을 제공할 수 있게 디자인 하였다. 또한 알루미늄과 스테레스 스틸을 몸체 재질로 채택하여 내구성, 내부식성 등이 우수한 제품이다.

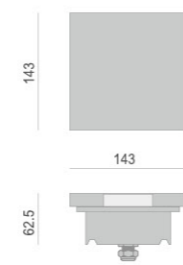


Energy Saving
82%
LED 3.6W vs Halogen 20W

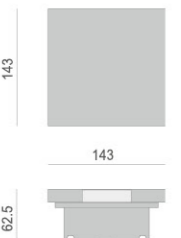


CLASS III 1.06kg

MODEL	CODE NO.	LAMP	BASE	INPUT	lm/cd
BLOCK-ONE WAY 블럭-원웨이	6007-PO3.6	LED 3.6W	PCB	DC 24V	20[lm]



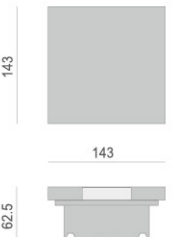
Energy Saving
82%
LED 3.6W vs Halogen 20W



CLASS III 1.05kg

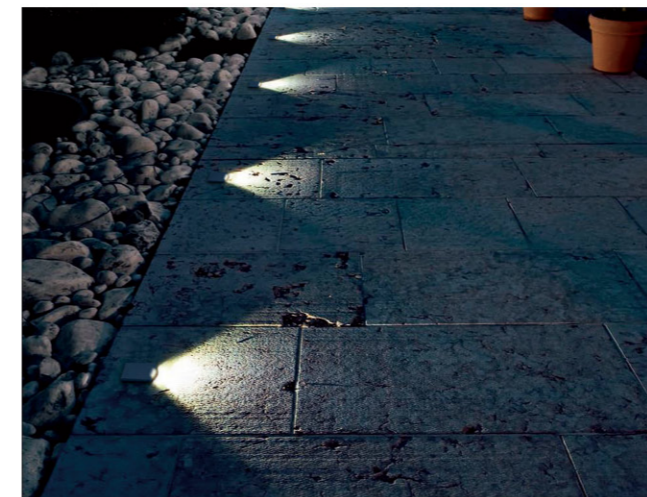
MODEL	CODE NO.	LAMP	BASE	INPUT	lm/cd
BLOCK-TWO WAY 블럭-투웨이	6007-PT3.6	LED 3.6W	PCB	DC 24V	20[lm]

Energy Saving
82%
LED 3.6W vs Halogen 20W



CLASS III 1.04kg

MODEL	CODE NO.	LAMP	BASE	INPUT	lm/cd
BLOCK-FOUR WAY 블럭-포웨이	6007-PF3.6	LED 3.6W	PCB	DC 24V	20[lm]



- Material :** Body_ aluminum die casting. Diffuser_ 15mm toughened anti UV clear polycarbonate. Cover frame_ stainless steel plate. Heat sink_ aluminum die-casting. Housing_ stainless steel pipe. Gasket and seals_ silicone rubber. Fixings_ stainless steel screws.
- Finishing :** Mechanical and chemical anticorrosion treatment; AKZONOBEL, Polyester, UV resistant, exterior paint system, thermally cured at 200 °C
- Adjustment :** Fixed lighting fixture
- Power :** Electronic power supply unite excluded
- Input Voltage :** DC 24V
- Control Gear :** Sub-controller included (Request on external sub-controller)
- Options :** Remote divers on request (Dimming, color change)
Cable lengths on request
- Paint Color :** Dark gray painted (Standard) / Another paint color on request